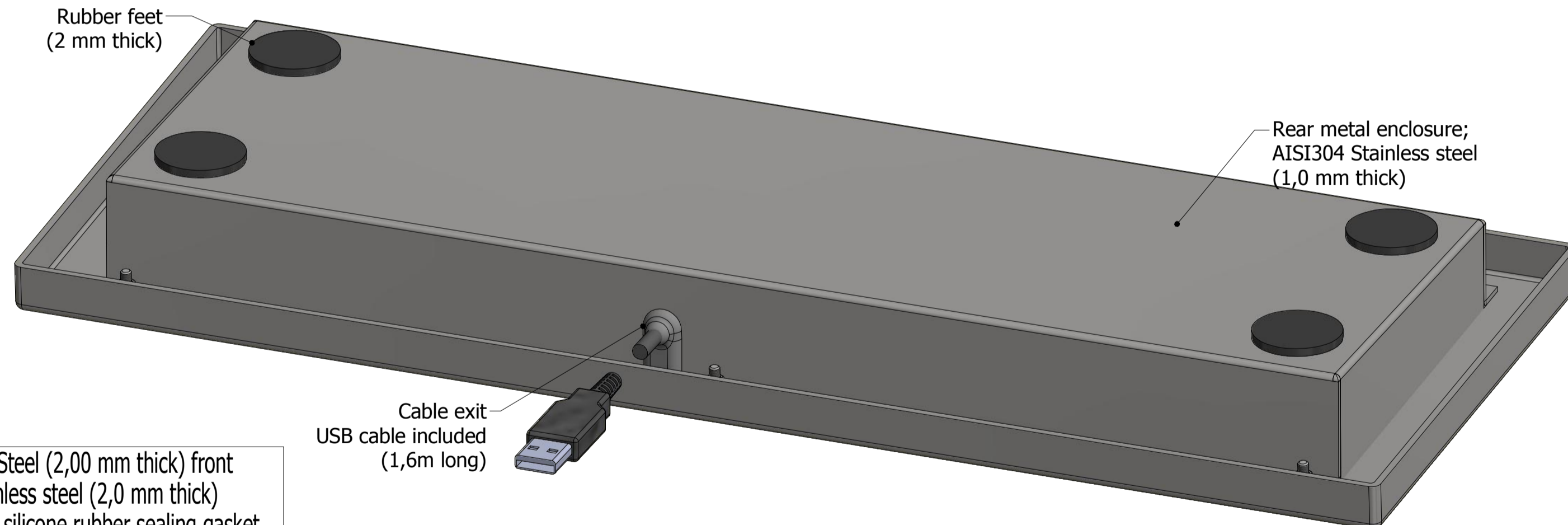
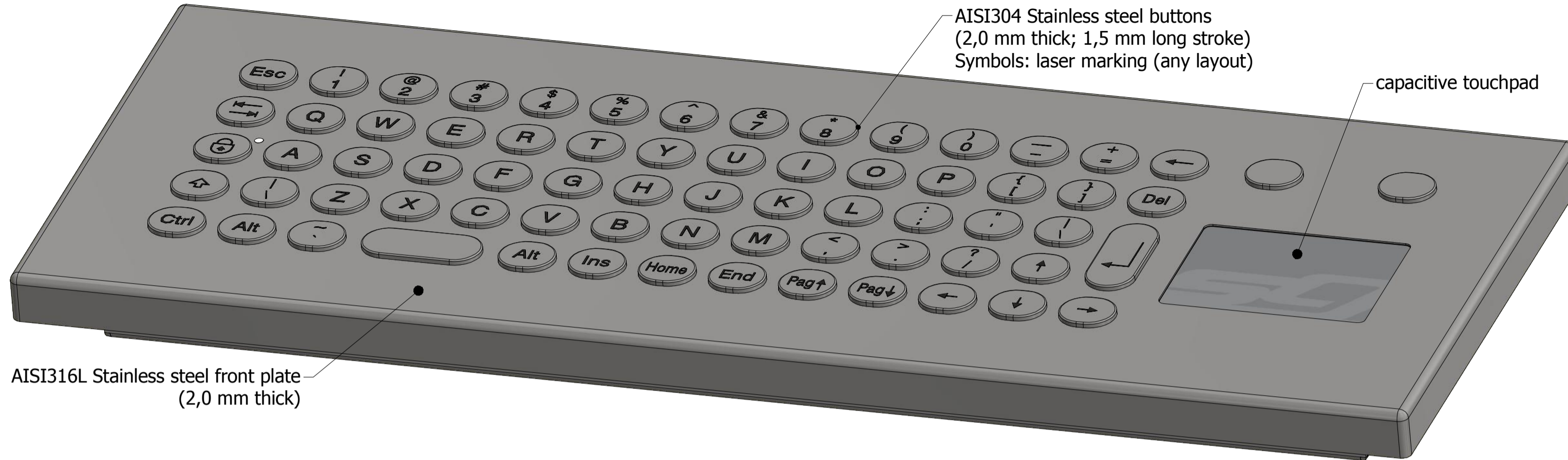


<b>Grafos Steel S.r.l.</b> Via Treves 19/21 41043 Formigine (MO) ITALY Tel. +39.059.57.50.267 www.grafossteel.it		Title: Fit Inox keyboard; 68 buttons (E16 keycap); desktop mount; USB+PS/2 interface; capacitive touchpad P/N: <b>FIT.68E16.T-TP</b> Dimensions without indicated tolerances - precision according to: <b>ISO 2768 F</b>		File: FIT.68E16.T-TP (Data-sheet).idw Rev: Drawn: <b>A.Tosi</b> Approved:																									
Date: <b>28/12/2016</b>	<table border="1"> <thead> <tr> <th rowspan="2">Tolerance class</th> <th colspan="4">Lenght (mm)</th> </tr> <tr> <th>&gt;0 - 6</th> <th>&gt;6-30</th> <th>&gt;30-120</th> <th>&gt;120-400</th> </tr> </thead> <tbody> <tr> <td>C (Coarse)</td> <td>± 0.2</td> <td>± 0.5</td> <td>± 0.8</td> <td>± 1.2</td> </tr> <tr> <td>M (medium)</td> <td>± 0.1</td> <td>± 0.2</td> <td>± 0.3</td> <td>± 0.5</td> </tr> <tr> <td>F (Fine)</td> <td>± 0.05</td> <td>± 0.1</td> <td>± 0.15</td> <td>± 0.2</td> </tr> </tbody> </table>		Tolerance class	Lenght (mm)				>0 - 6	>6-30	>30-120	>120-400	C (Coarse)	± 0.2	± 0.5	± 0.8	± 1.2	M (medium)	± 0.1	± 0.2	± 0.3	± 0.5	F (Fine)	± 0.05	± 0.1	± 0.15	± 0.2	Sheet: <b>1</b>	Of: <b>2</b>	
Tolerance class	Lenght (mm)																												
	>0 - 6	>6-30	>30-120	>120-400																									
C (Coarse)	± 0.2	± 0.5	± 0.8	± 1.2																									
M (medium)	± 0.1	± 0.2	± 0.3	± 0.5																									
F (Fine)	± 0.05	± 0.1	± 0.15	± 0.2																									
Material: -		Surface treatment: -		<b>UNLESS OTHERWISE SPECIFIED, DIMENSIONS ARE IN MILLIMETERS</b>																									



Material	AISI 316L Stainless Steel (2,00 mm thick) front plate; AISI 304 Stainless steel (2,0 mm thick) buttons with built-in silicone rubber sealing gasket
Lettering	Laser marking (any layout)
Button stroke	1,5 mm +/- 0,1 mm
Actuation force	1,5 N (typical)
Life expectancy	>2.000.000 cycles
IP Protection rate	IP65
Impact Protection Rate	IK08
Contact technology	Conductive carbon pill on Gold plated PCB
Connection	USB
Operating temperature	0°/+60°C
Storage temperature	-25°/+85°C

<b>Grafos Steel S.r.l.</b> Via Treves 19/21 41043 Formigine (MO) ITALY Tel. +39.059.57.50.267 www.grafossteel.it		Title: Fit Inox keyboard; 68 buttons (E16 keycap); desktop mount; USB+PS/2 interface; capacitive touchpad																									
P/N: <b>FIT.68E16.T-TP</b>		Rev:	File: FIT.68E16.T-TP (Data-sheet).idw																								
Date: 28/12/2016		Dimensions without indicated tolerances - precision according to: <b>ISO 2768 F</b>																									
Material: -		Surface treatment: -																									
		<table border="1"> <thead> <tr> <th rowspan="2">Tolerance class</th> <th colspan="4">Lenght (mm)</th> </tr> <tr> <th>&gt;0 - 6</th> <th>&gt;6-30</th> <th>&gt;30-120</th> <th>&gt;120-400</th> </tr> </thead> <tbody> <tr> <td>C (Coarse)</td> <td>±0.2</td> <td>±0.5</td> <td>±0.8</td> <td>±1.2</td> </tr> <tr> <td>M (medium)</td> <td>±0.1</td> <td>±0.2</td> <td>±0.3</td> <td>±0.5</td> </tr> <tr> <td>F (Fine)</td> <td>±0.05</td> <td>±0.1</td> <td>±0.15</td> <td>±0.2</td> </tr> </tbody> </table>		Tolerance class	Lenght (mm)				>0 - 6	>6-30	>30-120	>120-400	C (Coarse)	±0.2	±0.5	±0.8	±1.2	M (medium)	±0.1	±0.2	±0.3	±0.5	F (Fine)	±0.05	±0.1	±0.15	±0.2
Tolerance class	Lenght (mm)																										
	>0 - 6	>6-30	>30-120	>120-400																							
C (Coarse)	±0.2	±0.5	±0.8	±1.2																							
M (medium)	±0.1	±0.2	±0.3	±0.5																							
F (Fine)	±0.05	±0.1	±0.15	±0.2																							
		Sheet: 2	Of: 2																								

UNLESS OTHERWISE SPECIFIED, DIMENSIONS ARE IN MILLIMETERS