



Foodteq
A PART OF TECHON7 GROUP

Accessory catalogue 2025

FT Industrial Touch
Screen Computer
accessoires



The floor stand

FTS1 Floor stand gives you the opportunity to place your FT Touch Computer on the floor. Set up the floor stand with four screws into the floor, and then you can mount any of the FTS Accessories you want directly on the floor stand (Up to 24" FT Touch Computers).

All accessories for the FT Touch Screen Computers are made to be modular, flexible and easy to clean.

All stainless-steel accessories are manufactured in high quality AISI 316 which means they can be used in very harsh environments like the food industry.

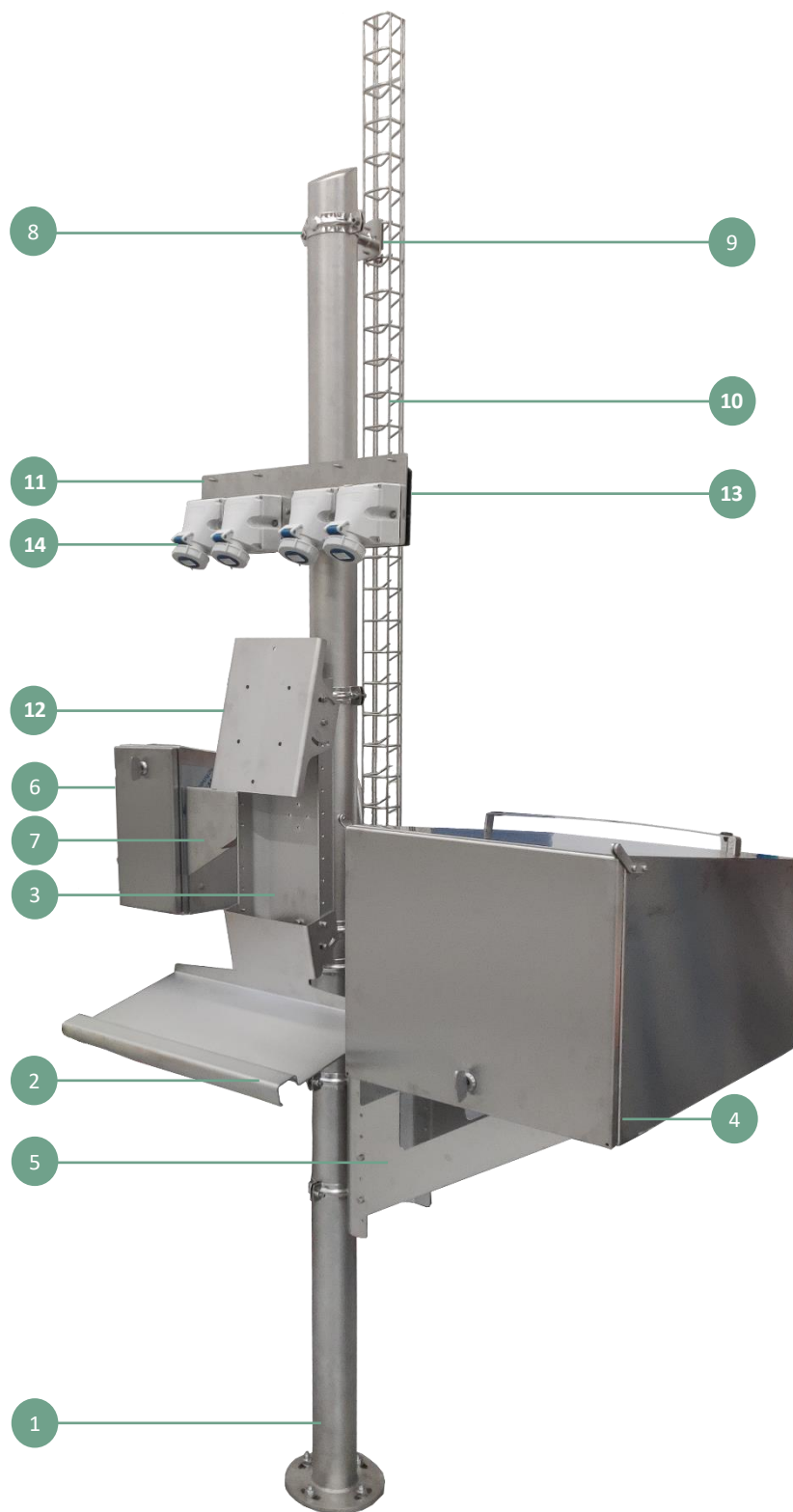


Image	Part no.	Description
1	14819	FTS1 Floor stand 1.9 meters el.pol
2	14820	FTS2 Keyboard arm el.pol
3	14821	FTS3 Mounting bracket printer shelf, term., keyb. el.pol
4	14822	FTS4 Printer box
5	14823	FTS5 Shelf for printer box el.pol
6	14824	FTS6 Scanner box
7	14825	FTS7 Shelf for scanner box el.pol
8	14826	FTS8 Ringbracket for floor stand el.pol
9	14827	FTS9 Bracket for cable tray
10	14828	FTS10 Cable tray 3.0 meters
11	14829	FTS11 Plate for power outlets
	14830	FTS12 M6 screws w. locknut
	14583	FTS13 Split cable gland - IP54 w. 4 grommets
	14845	FTS14 Split cable gland - IP54 w. 2 grommets
12	14576	FTS15 Basic bracket el.pol
13	14855	FTS17 IT box plate
14	15153	FTS19 Mennekes 9301 CEE wall mounted socket 3-pol 16A 230V IP67

FTS1 Floor stand 1.9 meters

Part no. 14819

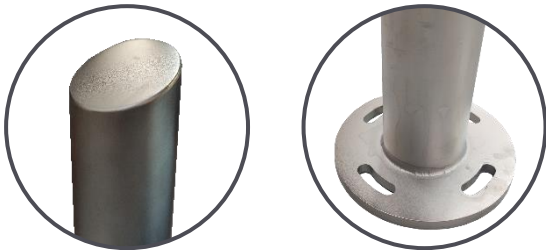
FTS1 Floor stand is available in standard height of 1.9 meters (can be delivered in other lengths on request)

The Floor stand is fully welded at the top and bottom for easy cleaning.

The top is tilted 25 degrees to ensure that water does not stay on the stand after cleaning.

The Floor stand is the main part for this FTS setup.

The Floor stand is made in high quality AISI 316 stainless steel, for easy cleaning.



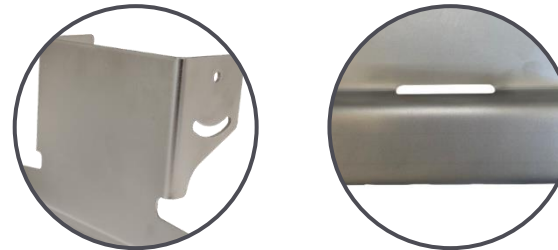
FTS2 Keyboard arm

Part no. 14820

The FTS2 Keyboard arm is used with the FTS3 mounting bracket.

When using the FTS12 M6 screw set, you can adjust and tilt the Keyboard arm vertically.

The Keyboard arm is made in high quality AISI 316 stainless steel, for easy cleaning.



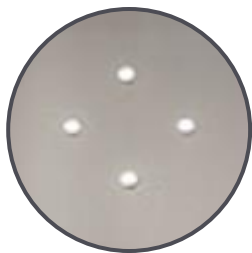
FTS3 Mounting bracket

Part no. 14821

The Mounting bracket is a key part for the full setup. You will need the FTS12 M6 screw set to assemble.

The following can be assembled with the Mounting bracket:

- FTS2 Keyboard arm
- FTS5 Shelf for printer box
- FTS7 Shelf for scanner box
- FTS12 Basic bracket
- The Mounting bracket is made in high quality AISI 316 stainless steel.



FTS4 Printer box

Part no. 14822

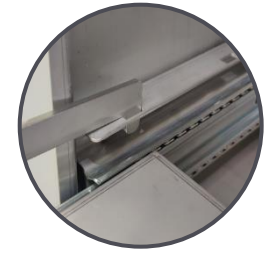
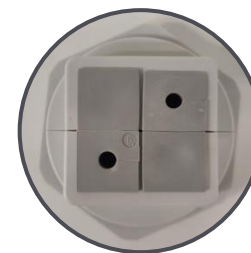
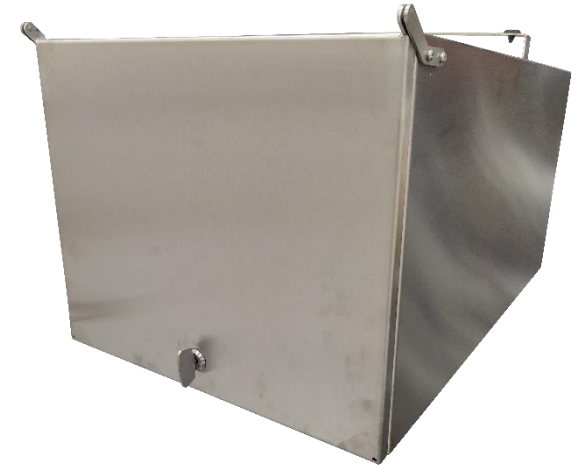
The FTS4 Printer box is designed for the label printer PX6i.

The Printer box is IP65 water and dust protected.

When using the FTS13 Split gland, the shelf can be locked in five positions.

To attach the Printer box to the FTS5 shelf, you will need the FTS23 M8 screw set.

The Printer box is made in high quality AISI 316 stainless steel.



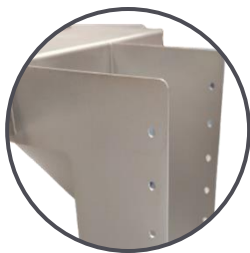
FTS5 Shelf for printer box

Part no. 14823

FTS5 Printer shelf is used together with the FTS4 Printer box.

When attaching the Printer shelf to the FTS3 Mounting bracket, you will need the FTS12 M6 screw set.

The Shelf for printer box is made in high quality AISI 316 stainless steel.



FTS6 Scanner box

Part no. 14824

The FTS6 Scanner box is designed for the scanner Honeywell Granit 1981i or scanner boxes equivalent of the dimensions:

H:330m/W:175mm/L:250mm.

Innerplate for wire running.

The Scanner box is IP65 water and dust protected when using the FTS14 split gland.

The Scanner box is made in high quality AISI 316 stainless steel



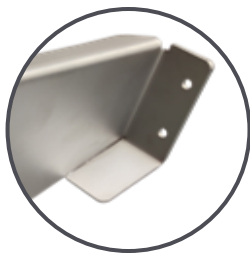
FTS7 Shelf for scanner box

Part no. 14825

FTS7 Shelf for scanner is used together with the FTS6 Scanner box.

When attaching the Scanner box onto the shelf you will need the FTS12 M6 Screw set.

The Shelf for scanner box is made in high quality AISI 316 stainless steel.



FTS8 Ringbracket for Floor stand

Part no. 14826

FTS8 Ringbracket is a key part in the assembling of the floor stand setup.

It is used to attach the:

- FTS9 + 10 Cable tray
- FTS11 + 17 power and IT plate
- FTS15 Basic bracket to hold your FT Touch Screen Computer
- FTS3 Mounting bracket

You will need the FTS12 M6 screw set to attach the different product parts.

The ringbracket is made in high quality AISI 316 stainless steel.



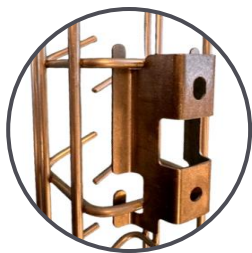
FTS9 Bracket for cable tray

Part no. 14827

FTS9 Bracket for cable tray is used together with the FTS10 Cable tray. You will need the FTS12 M6 screw set to attach to the FTS8 Ringbracket.

When assembling we recommend that you mount the brackets in opposite directions, to ensure the best solution.

The Bracket is made in high quality AISI 316 stainless steel.



FTS10 Cable tray 3 meters

Part no. 14828

FTS10 Cable tray is used together with the FTS9 Bracket for cable tray.

The length of the cable tray is 3 meters.

The Cable tray is made in high quality AISI 316 stainless steel.



FTS11 Plate for power outlets

Part no. 14829

FTS11 Plate for power outlets is used together with the FTS8 ringbracket and the FTS19 Socket CEE 3-pol 16A 230V IP67.

When assembling you will need the FTS12 M6 screw set.

The Plate for power outlets is made in high quality AISI 316 stainless steel.



FTS12 M6 screws

Part no. 14830

FTS12 M6 Screw set is used to assemble all the floor stand setup parts.

M6 crew set is made in high quality AISI 316 stainless steel.



FTS13 Split cable gland 4 grommets

Part no. 14883

FTS13 split gland is used together with the FTS4 Printer box.

The split gland is made to reach the IP66 standard for Ingress protection.

Seven types of grommets
(H: 19mm,W: 21mm,L: 21mm)

- Blank grommet
- Clamping range 5 - 6 mm
- Clamping range 6 - 7 mm
- Clamping range 8 - 9 mm
- Clamping range 10 - 11 mm



FTS14 Split cable gland 2 grommets

Part no. 14845

FTS14 split gland is used together with the FTS6 Scanner box.

The split gland is made to reach the IP66 standard for Ingress protection.

Three types of grommets
(H: 19mm,W: 21mm,L: 21mm)

- Blank grommet
- Clamping range 5 - 6 mm
- Clamping range 8 - 9 mm



FTS15 Basic bracket

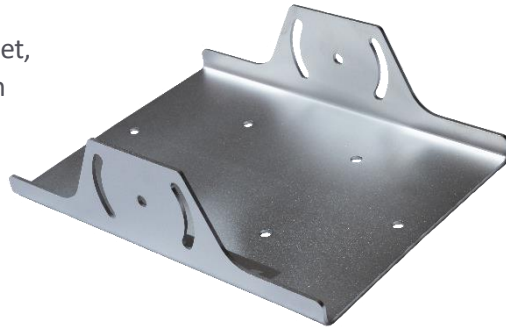
Part no. 14876

FTS15 Basic bracket is used together with the FT Touch screen computers.

When using the FTS12 M6 Screw set, you can adjust and tilt the FT Touch Screen Computer vertically as you wish.

When attaching the FT Computers you need the FTS23 M8 screw set.

The Basic bracket is made in high quality AISI 316 stainless steel.



FTS17 IT box plate

Part no. 15118

FTS17 IT box plate is used together with the FTS11 Plate for power outlets.

When assembling you will need the FTS12 M6 Screw set.

The IT box plate is made in high quality AISI 316 stainless steel.



FTS19 CEE power outlet 3-pol

Part no. 15153

FTS19 Split gland is used together with the FTS11 Plate for power outlets.

FTS19 Socket CEE 3-pol 16A 230V IP67.

When you attach it onto the plate for power outlets, you will need the FTS12 M6 screw set.



FTS20 Stand for computer

Part no. 13598

FTS20 is black and has 2 holes to attach the FT Touch Computers using the FTS23 screw set.

The Stand is made in high quality AISI 316 stainless steel.

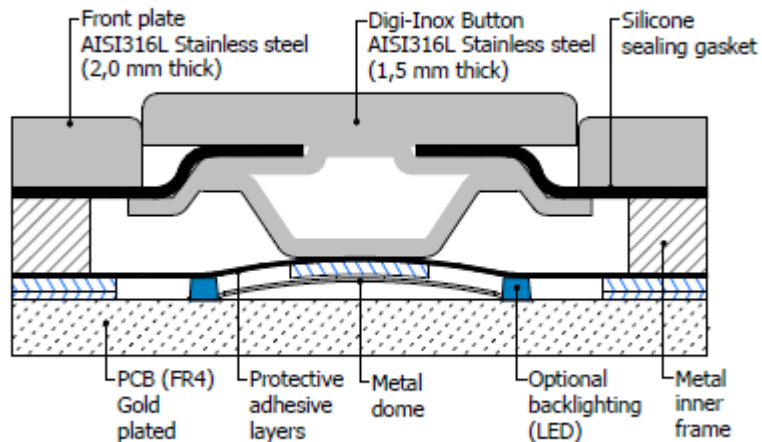


Precise and versatile DIGI-Inox Keyboards Patented

digi PATENTED
INOX



Fittings	Front and Rear mounted
Pointing device	Trackball and Capacitive touch
Interfaces	PS/2 (minidin) and USB type A
Number of operations	>3.000.000 operations
IP degree	IP54, IP65

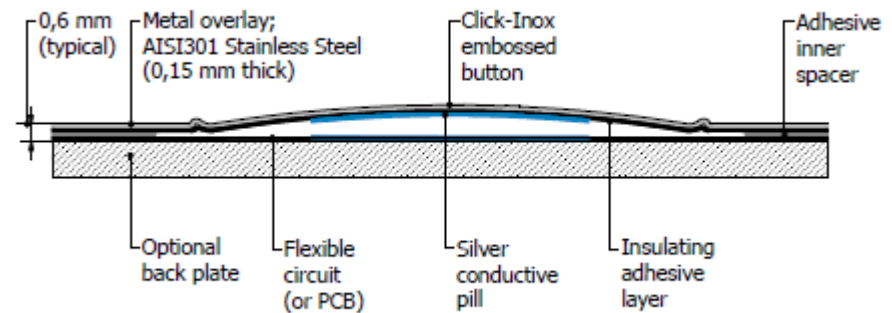


Flexible and strong CLICK-Inox Keyboards Patented

click PATENTED
INOX



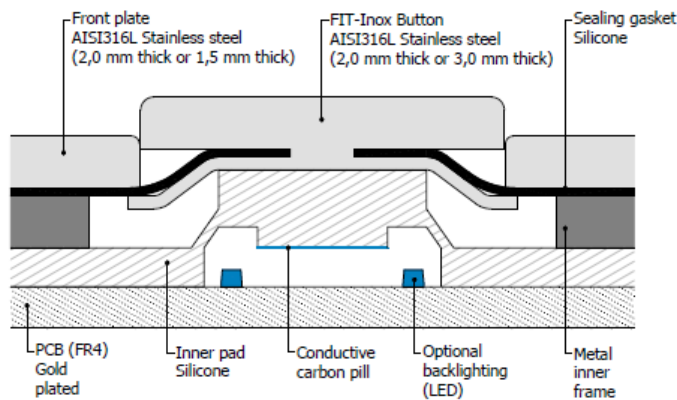
Fittings	Front and Rear mounted
Pointing device	Trackball and Capacitive touch
Interfaces	PS/2 (minidin) and USB type A
Number of operations	>3.000.000 operations
IP degree	IP54, IP65



Handy and strong FIT-Inox Keyboards



Fittings	Front and Rear mounted + Desktop version
Pointing device	Trackball and Capacitive touch
Interfaces	PS/2 (minidin) and USB type A
Number of operations	>3.000.000 operations
IP degree	IP54, IP65



Tailored Solutions Custom Keyboards



Foodteq in collaboration with business partner: Grafos Steel.

Develop custom-made products, created especially for even the most unusual and special requests.

Which does not follow the usual standards of shape, color and material.

We can develop any kind of Keyboard with special customization without burdening delivery times and costs, both of which remain fast and competitive.

We are talking about keyboards, which can be composed of various accessories such as touch panels, aluminum frames, silk-screened fronts, fittings and more.



FTS25 Keyboard SK312-BL

Part no. 15349

Rubberized surface provides comfortable use of typing

Language: All the languages compatible with Windows®
Communication: USB2.0
Key layout: 100 keys

Dimensions:
380(L) x 130(W) x 12(T) mm

Protection level: IP68

The FTS25 is used together with the FTS2 Keyboard arm and FTS26 Mouse.



FTS26 Mouse SM501 with cable

Part no. 15350

Waterproof optical Mouse

A stylish design and comfortable shape, rugged and waterproof, made of silicone. Precise and smooth cursor movement, superior performance

800 dpi optical sensor with 3000 frames/second scan rate

Button layout: Left & right buttons and scroll wheel performed by 3 buttons

Approvals: CE ROHS FCC

The FTS26 is used together with the FTS2 Keyboard arm and FTS25 Keyboard.



FTS15 Basic bracket

Part no. 14876

FTS23 M8 Screw set is used to Attach the FTS4 printer box and all the FT Touch Screen Computers.

M8 Screw set is made in high quality AISI 316 stainless steel.



FT FT Wall Mount with Keyboard arm

Part no. 15224

FT wall mount with keyboard arm
Can be fitted with the FT computer series, all 3 sizes (15" + 17" + 24")

The Computer can be adjusted horizontally, and the keyboard can be installed after the person using it.

See our different Keyboards to find the best solution for you.



FT1 Wall Mount Bracket 1 axis

Part no. 14584

FT wall mount 1 axis

Can be fitted with the FT computer series, all 3 sizes (15" + 17" + 24")

The Computer can only be adjusted horizontally.

The small side is to be installed
On the wall.



FT2 Wall Mount Bracket 2 axis

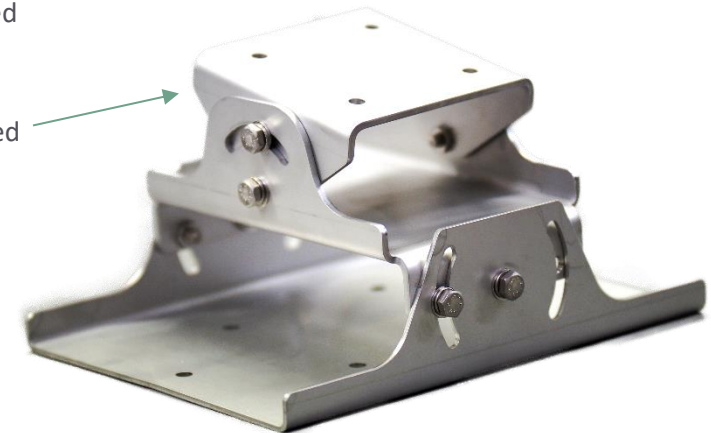
Part no. 14585

FT wall mount 2 axis

Can be fitted with the FT computer series, all 3 sizes (15" + 17" + 24")

The Computer can be adjusted horizontally and vertically.

The small side is to be installed
On the wall.



FT9 + FT11 Ceiling mount

Part no. 14584

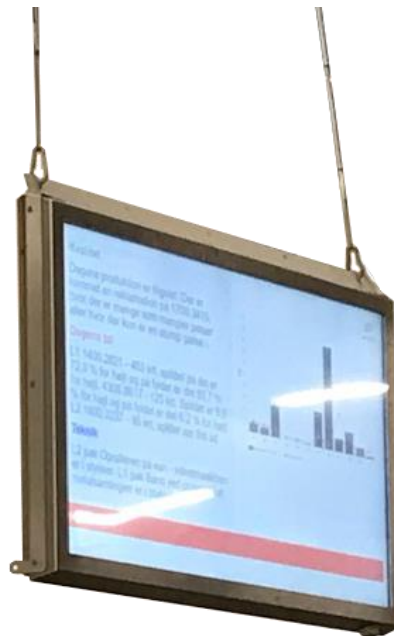
FT Ceiling mount
for FT650 and FT460 Series

Can be installed directly in the top bracket or be angled with the optional adjustment guide hole on the bottom side

There are 3 parts to be installed

- 1 top bracket
- 1 right bracket
- 1 left bracket

And are to be assembled with 2 screws



FT8 + FT10 Wall Mount Bracket 2 axis

Part no. 14585

FT Wall mount
for FT650 and FT460 Series

Can be installed directly
Onto the wall in your work area.

There are 3 parts to be installed

- 1 top bracket
- 1 right bracket
- 1 left bracket

And are to be assembled with 4 screws



Industrial Touch Screen Computers

Industrial Computers which all can be used together with the stands and accessories.

The different sizes from our FT Computer series below can all be fitted to the floor stand. This gives you the opportunity to place your FT Touch Screen Computer on the floor, where ever you need it in your production facilities.

All computers in the FT series, can be delivered as monitors without an CPU



FT150

15"

Part no. 15419



FT171

17"

Part no. 15418



FT240

24"

Part no. 15420



Long-lasting Technical solutions for your needs now and in the future!

Foodteq has a wide product program of Industrial Touch Screen Computers and accessories for food production and other industries.

Our program of ruggedized industrial computer solutions can be used in various harsh environments from water to chemicals and dust.

Our solid solutions meet several specific requirements, and the modular concept ensures reliability, repairability, and performance.

Together we achieve more.

7 Grunde til at vælge Foodteq

- Modular design
- Reliability
- Performance
- Repairability
- Sustainability
- Produced in Denmark
- High return on investment

Foodteq – a part of Techon7 Group
Centerbakken 1 - EXXIT59
DK-7100 Vejle

T: +45 7060 2777
W: www.foodteq.dk

